

SPECIFICATION SHEET

PVC Trade Tile Trim



MADE IN THE UK



✓ Better Quality ✓ Better Value ✓ British Made

• T: 01543 500893 • F: 01543 500894 • E: sales@tilerite.co.uk • W: tilerite.co.uk

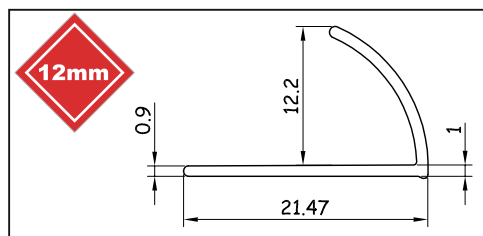
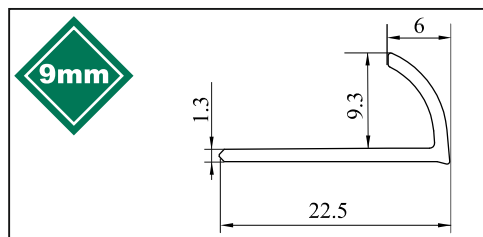
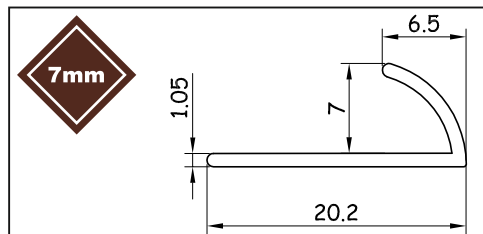
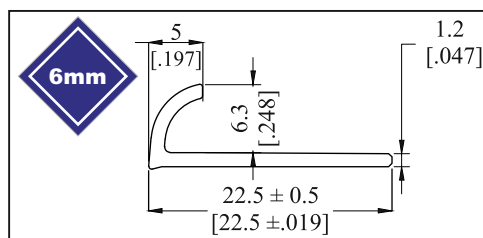
Product Description

Tile Rite PVC Trade Trim is a standard quadrant profile designed to protect and decorate tiled outer wall corners and other tiled edges prone to damage.

Dimensions and Colour

Available in 6mm, 7mm, 9mm & 12mm internal depths and 2.44m lengths. For colour options see colour chart.

Specification Drawings



Maintenance

Tile Trade Trim requires no special maintenance. Cleaned periodically using a PH neutral detergent to maintain the appearance. Regular cleaning aids the longevity of the profile and ensures there is no corrosion that could affect safety.

Technical Details

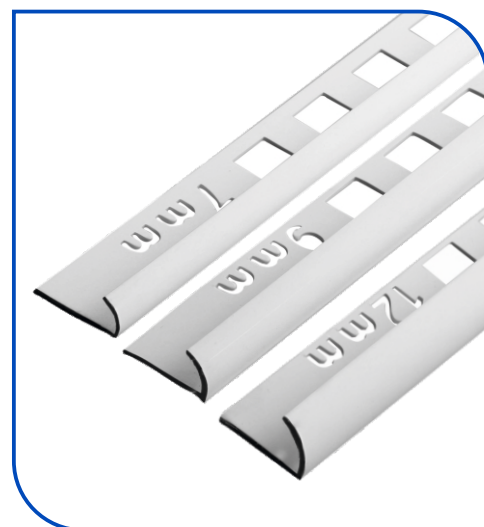
PVC is particularly suitable for a wide range of applications due to its excellent chemical resistance.

Exceptions: Not recommended for use above 60°C. Resistant to most oils, alcohols, petrol and fats. It is unsuitable for use in contact with aromatic and chlorinated hydrocarbons, ketones, nitrocompounds, esters and cyclic ethers.

GRADE: LG0000 - The raw material used in the manufacture of these products is calcium zinc stabilized formulation and contains no lead or substances of very high concern (SVHC). It is fully compliant with WEEE & RoHS Directives.

Installation

- ❶ Select trim according to tile thickness.
- ❷ Trowel tile adhesive over the area that forms the perimeter of the tiled covering.
- ❸ Press the perforated anchoring leg of the trim into the tile adhesive and align, mechanical fix if required.
- ❹ Trowel additional adhesive over the perforated anchoring leg to ensure full coverage.
- ❺ Solidly embed the tiles so that the tiled surface is flush with the top of the profile, the profile should not be higher than the tiled surface, but rather up to approximately 1mm lower.
- ❻ A grout gap is not necessary, however if a gap is visible ensure grout is compressed firmly into the gap.



CODE	DEPTH	COLOUR
ETE803	6mm	White
ETE001	7mm	White
ETE002	7mm	Soft Peach
ETE005	7mm	Ivory
ETE017	7mm	American Bone
ETE018	7mm	Black
ETE003	9mm	White
ETE004	9mm	Soft Peach
ETE006	9mm	Ivory
ETE013	9mm	Black
ETE014	9mm	American Bone
ETE010	12mm	White
ETE011	12mm	Soft Peach
ETE012	12mm	Ivory
ETE015	12mm	American Bone
ETE016	12mm	Black

PROPERTY	UNIT	RESULT	TEST METHOD
Specific Gravity (According to Colour)	G/ccM	1.42	ASTM D692
Vicat Softening Point	°C	78	BS2782:120B
Apparent Modulus of Elasticity	Mpa	2300	BS2782:335A
Tensile Strength	Mpa	40	BS2782:320C
Impact Strength	KJ/M2	12	BS2782:359
Heat Stability	Mins	88	BS2782-130A