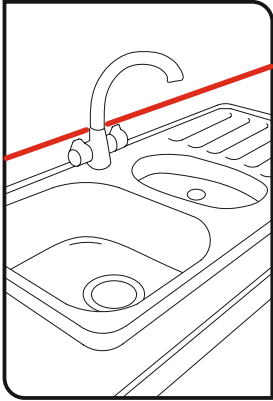


Easy Seal

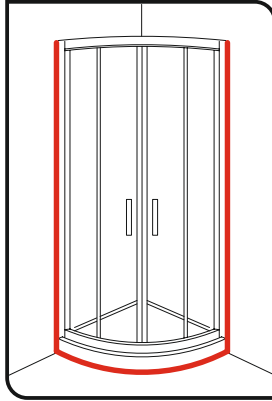
Waterproof flexible self adhesive sealing tape



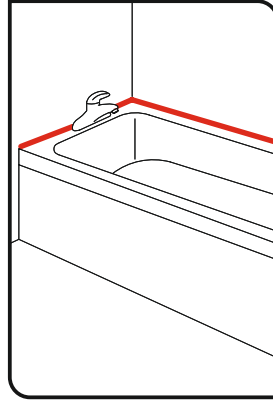
Use instead of silicone around



✓ Sinks



✓ Showers



✓ Baths

- For use on Sinks, Showers & Baths
- 23mm wide & 3.5m Long
- Antibacterial
- Mould & Mildew Resistant
- No Discolouring

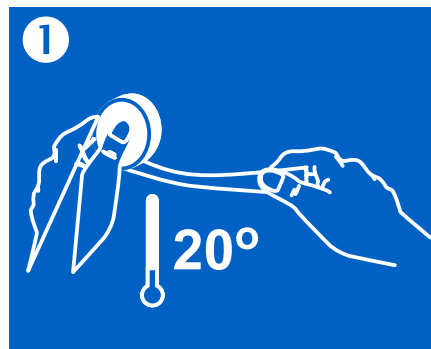
FITTING INSTRUCTIONS

Surface Preparation:

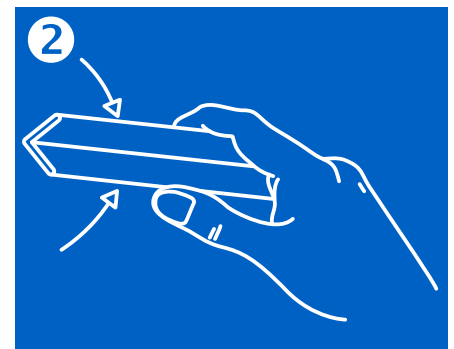
If another sealant has been used prior to application of the sealing tape, remove and clean thoroughly.

If silicone sealant has been used it must be removed completely.

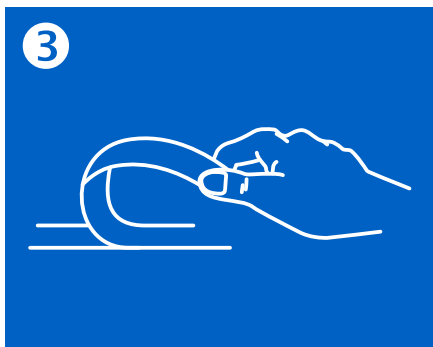
Dry all surfaces thoroughly before installing the sealing tape.



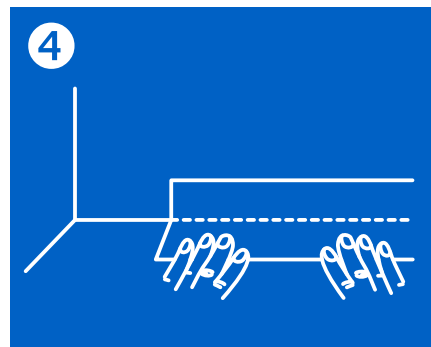
If stored in a cold environment, bring the sealing tape up to room temperature, this can be done with a hair dryer on a low setting. Fill the bath with water before applying the seal tape.



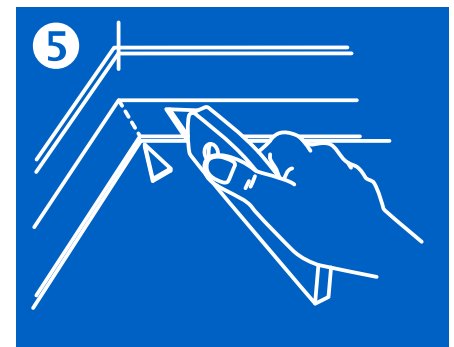
Fold the tape at the score line back on itself in excess of a 90° angle.



Peel off the first 30cm of release paper and press the tape onto the root of the joint. Take care not to stretch the tape when applying and not to touch the adhesive.



Best results are achieved by allowing the tape to take up its natural position as you press into the root of the joint.



At corners overlap the bottom half of the strip. It is best mitred ° at an angle of 45° by cutting through both layers. Press firmly over all applied lengths to ensure good adhesion and watertight seal.