

# SPECIFICATION SHEET

## L Shaped PVC® Tile Trim



✓ Better Quality ✓ Better Value ✓ British Made

• T: 01543 500893 • F: 01543 500894 • E: sales@tilerite.co.uk • W: tilerite.co.uk

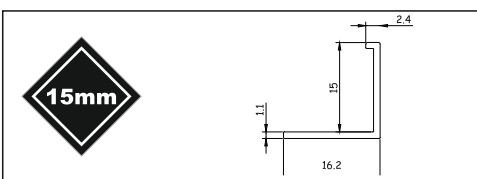
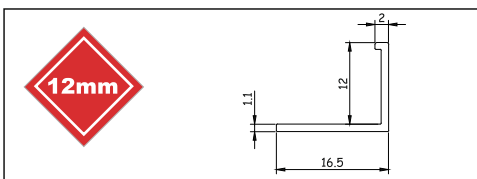
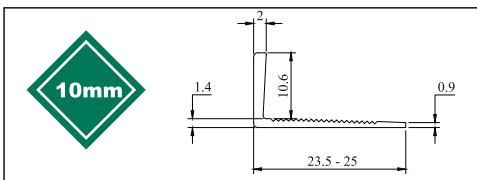
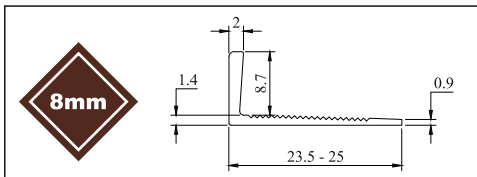
### Product Description

Tile Rite L Shaped PVC tile trim is designed to protect and decorate tiled outer wall corners and other tiled edges prone to damage.

### Dimensions and Colour

Available in 8mm, 10mm, 12mm & 15mm internal depths and 2.44m lengths. For colour options see colour chart.

### Specification Drawings



### Technical Details

PVC is particularly suitable for a wide range of applications due to its excellent chemical resistance. Exceptions: Not recommended for use above 60°C. Resistant to most oils, alcohols, petrol and fats. It is unsuitable for use in contact with aromatic and chlorinated hydrocarbons, ketones, nitrocompounds, esters and cyclic ethers.

### Installation

- ❶ Select trim according to tile thickness.
- ❷ Trowel tile adhesive over the area that forms the perimeter of the tiled covering.
- ❸ Press the perforated anchoring leg of the trim into the tile adhesive and align, mechanical fix if required.
- ❹ Trowel additional adhesive over the perforated anchoring leg to ensure full coverage.
- ❺ Solidly embed the tiles so that the tiled surface is flush with the top of the profile, the profile should not be higher than the tiled surface, but rather up to approximately 1mm lower.
- ❻ A grout gap is not necessary, however if a gap is visible ensure grout is compressed firmly into the gap.



Fig.1

### Maintenance

Tile Rite L Shaped PVC requires no special maintenance. Cleaned periodically using a PH neutral detergent to maintain the appearance. Regular cleaning aids the longevity of the profile and ensures there is no corrosion that could affect safety.

**GRADE: LG0000** - The raw material used in the manufacture of these products is calcium zinc stabilized formulation and contains no lead or substances of very high concern (SVHC). It is fully compliant with WEEE & R0HS Directives.

**DESCRIPTION:** Calcium Zinc stabilized Extrusion grade PVC, suitable for indoor use.

PROPERTIES	UNIT	TYPICAL RESULT	TEST METHOD
Specific Gravity (According to Colour)	G/cc	1.42	ASTM D692
Vicat Softening Point	°C	78	BS2782:120B
Apparent Modulus of Elasticity	MPa	2300	BS2782:335A
Tensile Strength	MPa	40	BS2782:320C
Impact Strength	KJ/M2	12	BS2782:359
Heat Stability	Mins	88	BS2782-130A